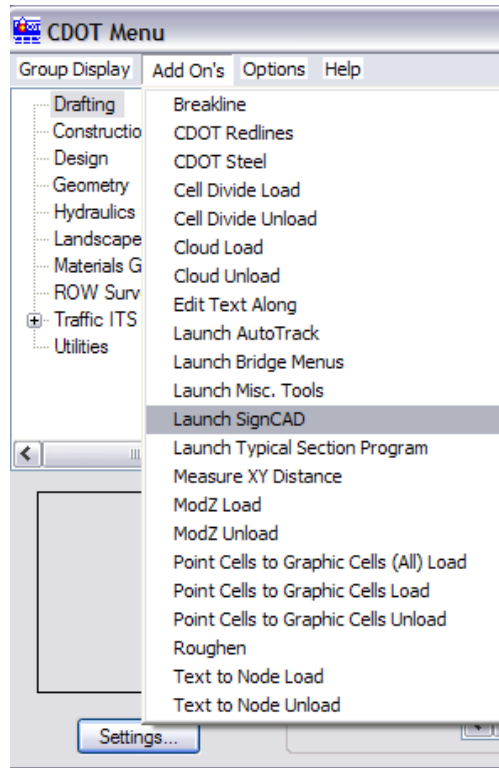


CDOT Placing SignCAD Signs

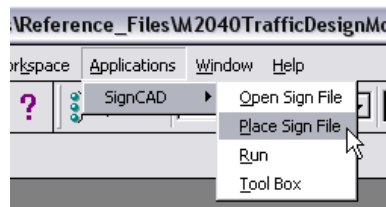


This document guides you through placing Sign graphics created by *SignCAD* software into *MicroStation* drawings.

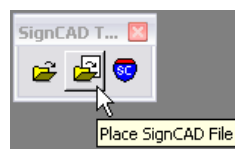
1. Open MicroStation and the file that you will be placing the SignCAD signs in.
2. From the *CDOT Menu*, Select **Add On's > Launch SignCAD**



3. From the MicroStation Menu, Select **Applications > SignCAD > Place Sign File**

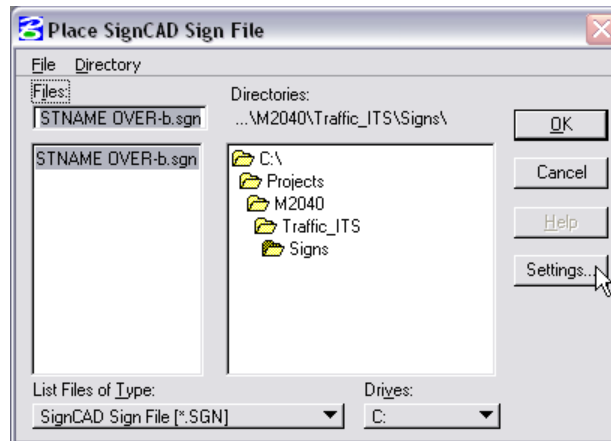


Note: You can also place a sign file from the *SignCAD* toolbox.

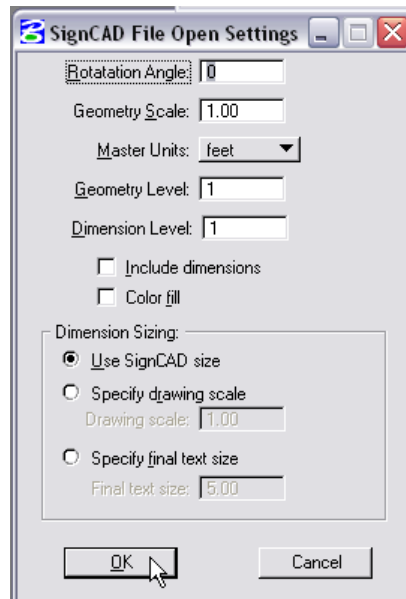


CDOT Placing SignCAD Signs.pdf

4. Navigate to the appropriate directory and select the SignCAD file. Verify the Settings by <D> Settings...



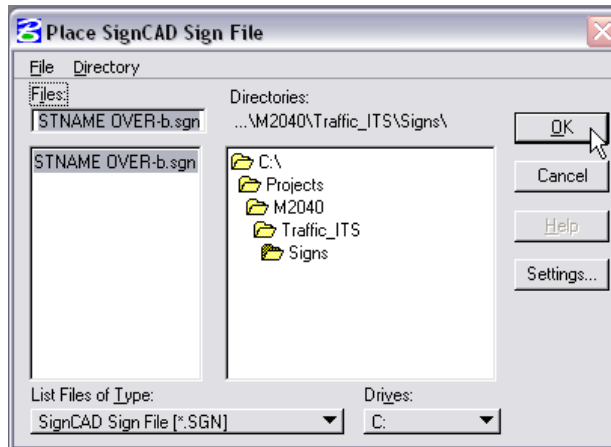
5. Verify the settings and <D> OK.



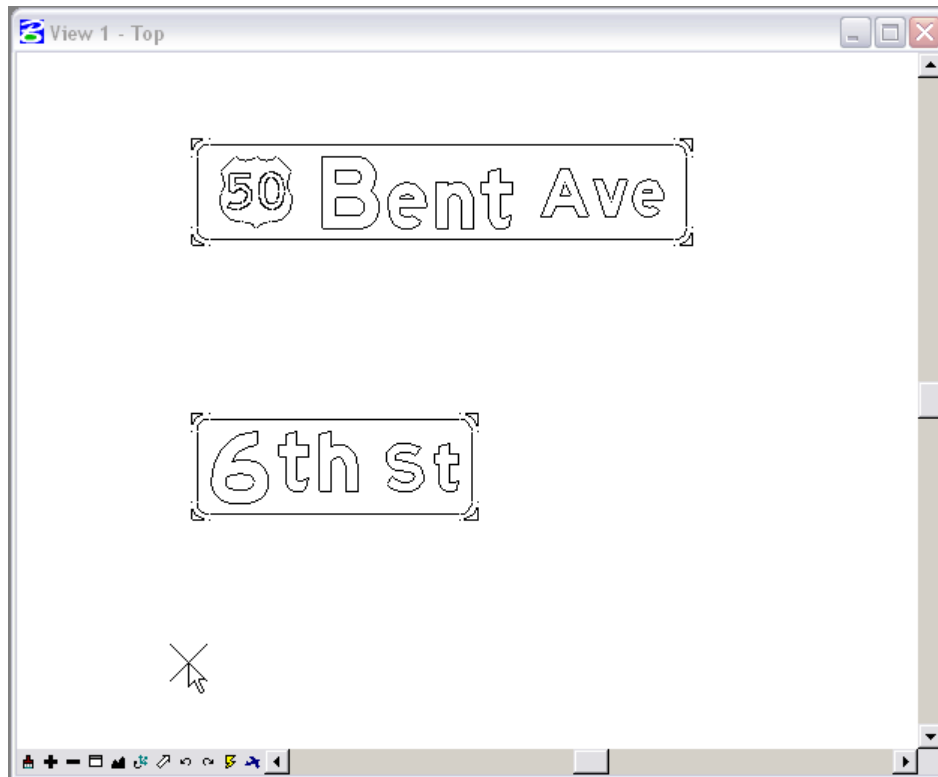
Note: If your MicroStation active scale is 1.0 and feet is selected for your master units, the graphic will come in true scale. You can scale the graphics after you place them to fit your drawing.

CDOT Placing SignCAD Signs.pdf

6. To place the file in MicroStation, <D> OK.



7. Select the location within the MicroStation file you would like to place the SignCAD file and <D> to place the graphics.



CDOT Placing SignCAD Signs.pdf

8. The result is SignCAD graphics placed in your MicroStation File.



Note: SignCAD places the graphics on the Default Level and at an Elevation other than zero (Z=0). You will need to select the graphics and change them to the correct MicroStation level (*TRAF_SIGNING_Proposed*). You can use the **MOD Z** utility from **Add On's > ModZ** found on the **CDOT Menu** to change the elevation to zero (Z=0).